

# Map

## SAR Tracking

### Overview

The tracking functionality is primarily provided to aid in search operations. When a team is searching an area, being able to see the ground covered is important to being thorough. A lost child or evidence may be in a small clump of trees which is overlooked by the search party.

### Security Considerations

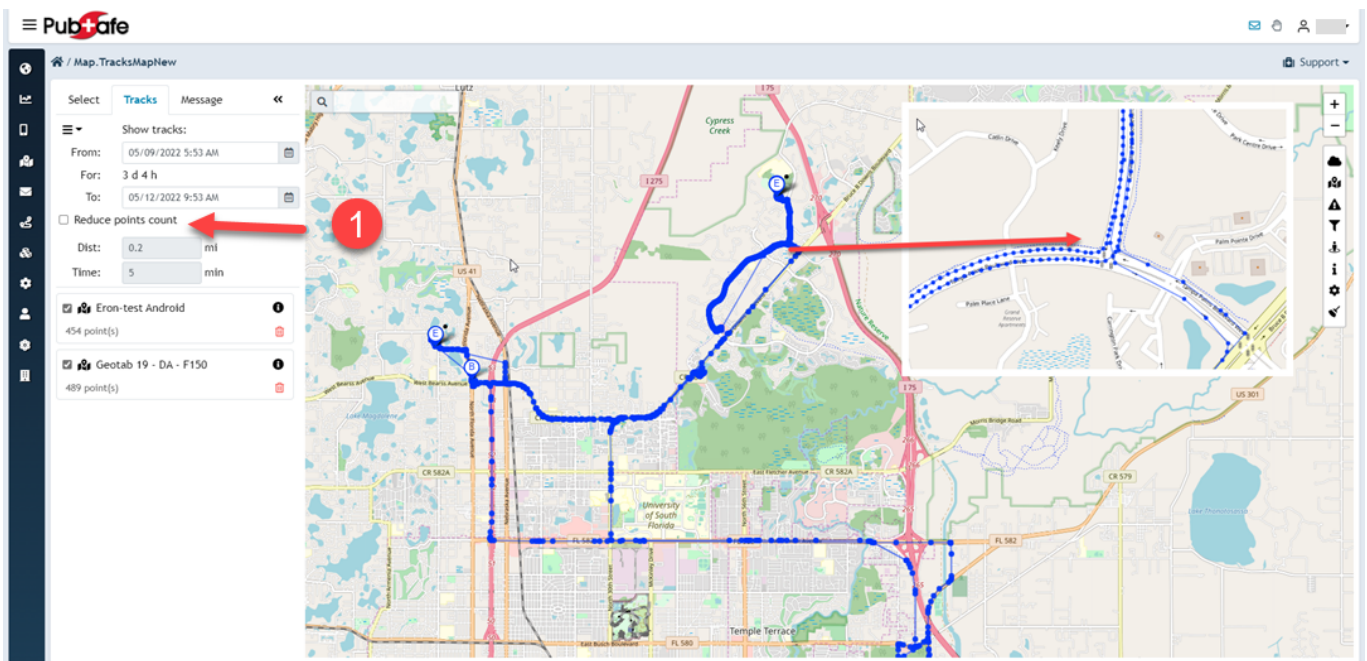
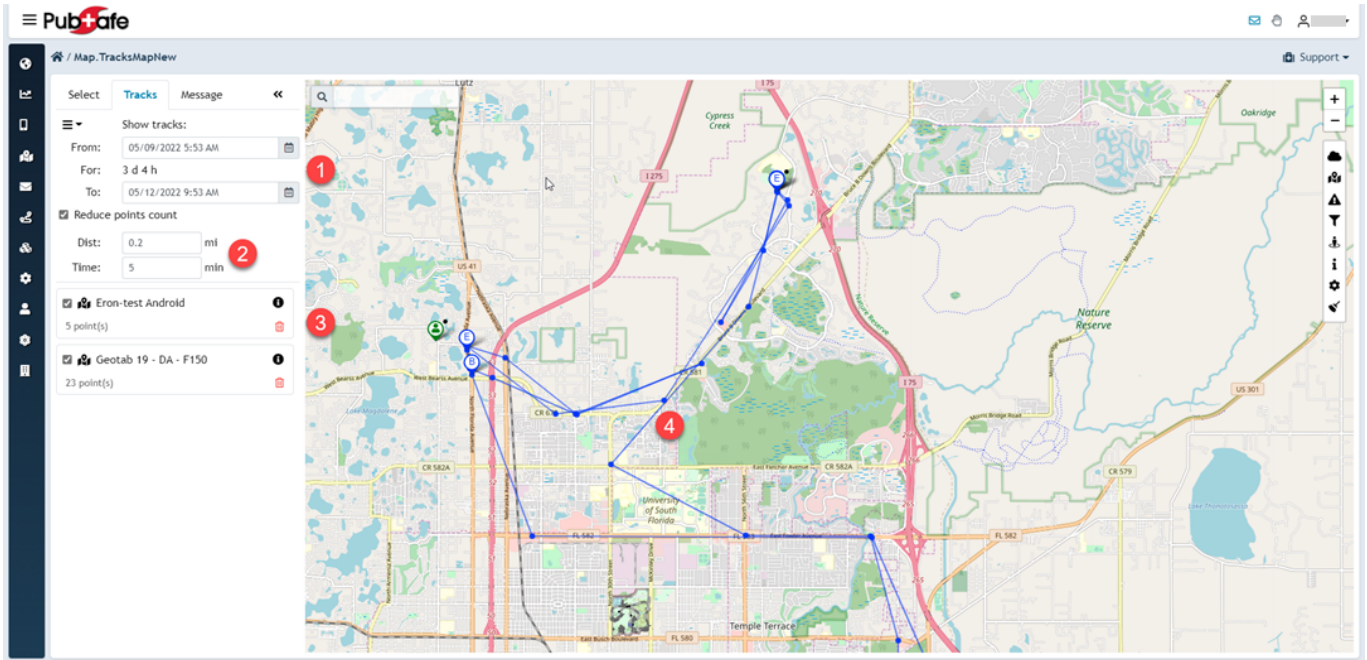
- SAR Tracking is limited to org members with specific permissions. It is not available to any PubSafe user, or guest website visitor.
- Search activity is stored in the History table for accountability. It indicates who, what and when a search was made so Orgs can determine if a search is appropriate.
- Users can opt to be excluded by changing their visibility settings. User visibility always supercedes Team and Org functionality.
- Search windows are limited to 96 hours. For SAR operations track history outside a search event is unnecessary.

### "Select" Tab Options

1. To remove non-org members from the map, check this box.
2. All users displayed on the map will be part of the users available on the Tracks tab. Non-Org members will automatically be filtered unless your org and user role has permission to track people outside your organization. This is intended for Public Benefit Researchers only.
3. A very specific group of users can be selected by right clicking on the map and using the various selection tools to select org members.
4. Click on the Track tab after selecting org members to track.



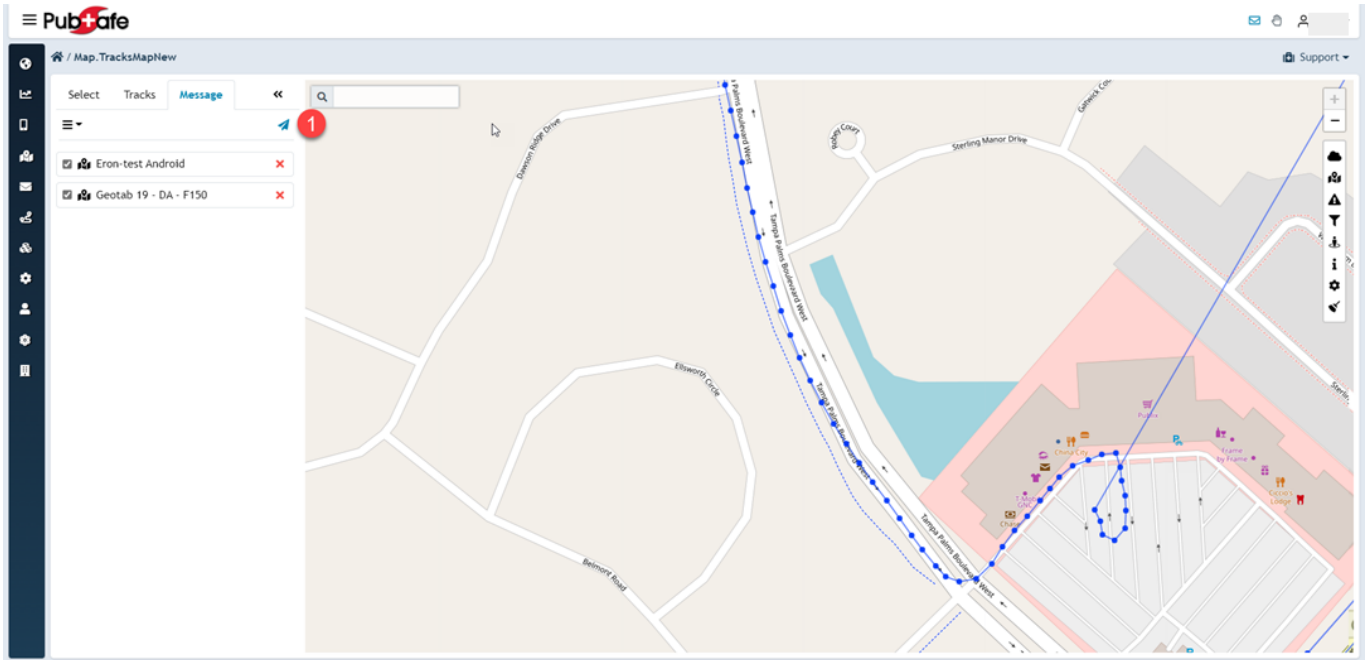
# Map



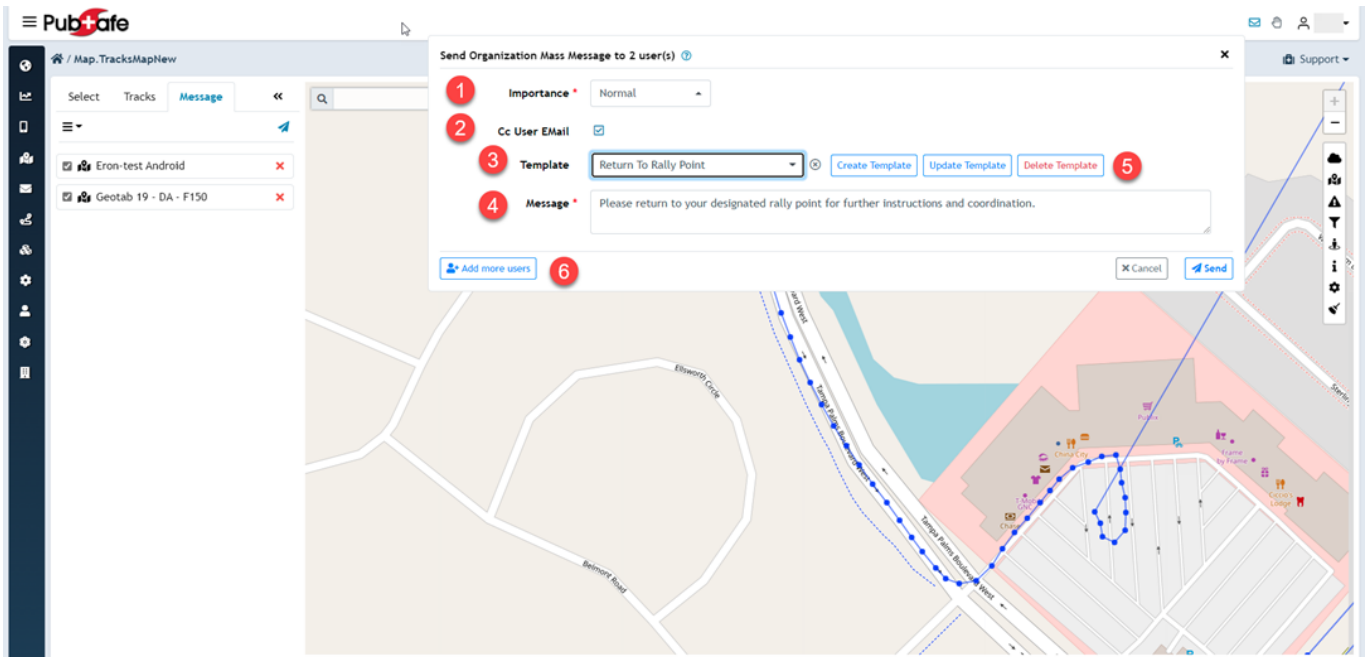
## "Message" Tab Options

1. After users are selected they may be sent a message from the same menu for convenience and efficient communication.

# Map



1. Set the message importance. Normal, Low, High, Very High
2. CC the user sending the message to confirm the message was transmitted.
3. Select a message template for your organization or create a unique message.
4. Add more users to the outgoing message as needed.
5. Create, edit and delete message templates for efficient and consistent messaging.
6. Government agencies that can message any PubSafe user are required to have two user permission to reduce the chance of errors and improve accountability.



# Map

Unique solution ID: #1119

Author: PubSafe

Last update: 2026-03-23 16:07